



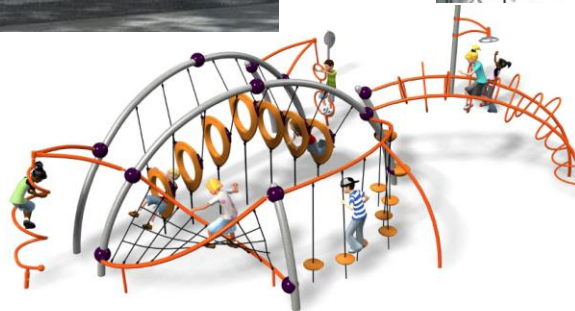
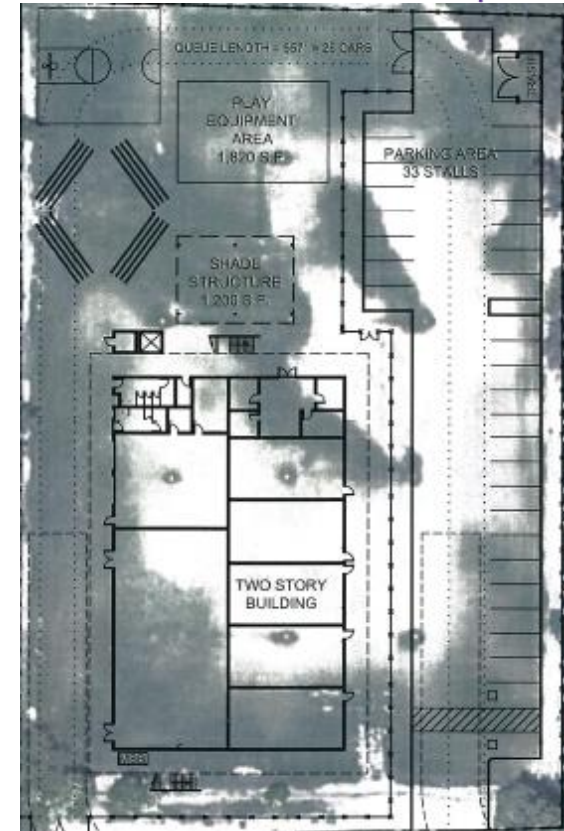
2013 Facilities Update

July 16, 2013

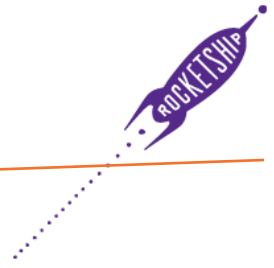
2013 Projects



Spark Academy at Sylvandale Ave.



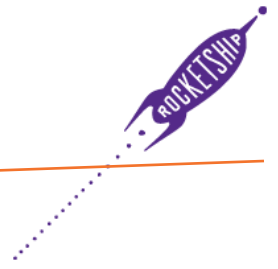
2013 Projects



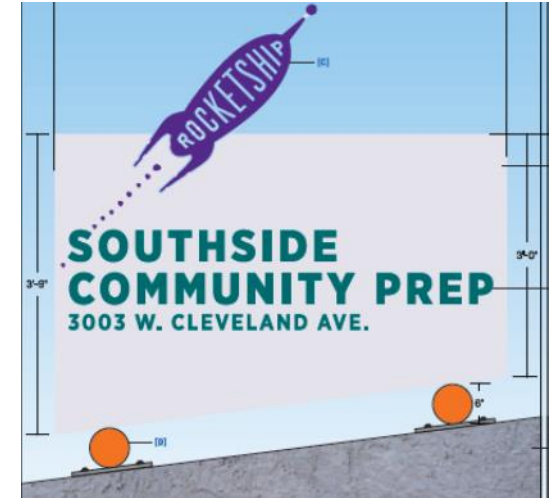
- Work 80% complete
- Timing on track; on-Budget
- Building mods delivered 6/14
- Move-in may be compressed; delivery on 8/9



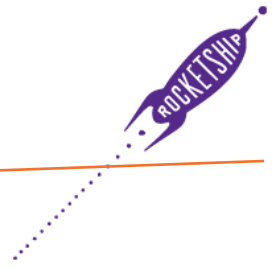
2013 Projects



MKE - Southside Community Prep at Cleveland Ave.



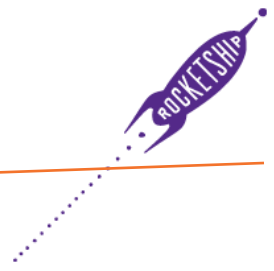
2013 Projects



- **Approximately 95% complete**
- **Timing on track; on-Budget**
- **Completion and move-in expected July 31**



Redesign Renovations



- **RMS**

- Work on flooring delayed by VCT order (RS colors not in stock), will be complete by 8/7 (lost 4 days)
- Requires more site work for capital improvements – tentative completion date on track for 8/12 (will not affect school move-in on 8/7)

- **RSSP, RLS, ROMO, RDP**

- Work on track for 8/3 completion dates at all sites

- **RSA**

- Expect DSA approval by 7/24
- Minimal work at this site; completion expected by 8/3